



ISSUE: 17

FEBRUARY 2025

FACEBOOK - https://web.facebook.com/people/Paarden-Eiland-CID/100095721544327/?_rdc=1&_rdr#

Letter from the Editor,

February month has been a fairly busy month as far as vehicle incidents are concerned. Our staff have been focusing on suspicious vehicles in the area especially during the day but despite our efforts, there was a noticeable increase in theft out of and attempted theft out of vehicles. This is a clear indication that people are still not paying attention to their vehicle security when they park when all they . It is time that the public realise that they have a responsibility to themselves to ensure that all goods are removed out of the vehicle and that the vehicle is locked. We have also distributed this information to other role players and service providers in the area allowing them to also adjust their approach to vehicle crime.

The PECID environmental team also started working according to the new five zone system and managed to complete the whole area and schedule as instructed. The schedule allows for a certain amount of days in a specific zone twice a month according to the predetermined need in that area. With this type of planning, we allocate cleansing teams to where it is needed most while ensuring that we still get to all our clients every two weeks. Our team of six permanent staff is boosted daily by casual staff of up to four members a day.

Our recycling drive, which is supported by Solid Waste Management, is gaining momentum and has already become a daily activity for our team. During the coming months we will launch a recycling initiative in line with the Cities laws in order to get recycling to be improved throughout the Paarden Eiland area.

Regards

CID Manager



EXCELLERATE
SERVICES



CITY OF CAPE TOWN
ISIXEKO SASEKAPA
STAD KAAPSTAD



FACEBOOK POST

Yesterday morning the PECID team dropped off their first recyclables in line with our planning to start recycling early 2025. Several large trolley bins full of glass and plastic were dropped off at respectively a recycling/buy back centre in Paarden Eiland as well as the Woodstock drop off facility. Our staff were trained to separate the glass, plastic, and cardboard that they pick up at the source. This makes it easier for them to store once they return to the office and cuts out the need for a separation area. We will continue to seek out ways to improve our recycling efforts in order to better our service to the community. Thank you to our staff for their dedication to a cleaner Paarden Eiland environment.

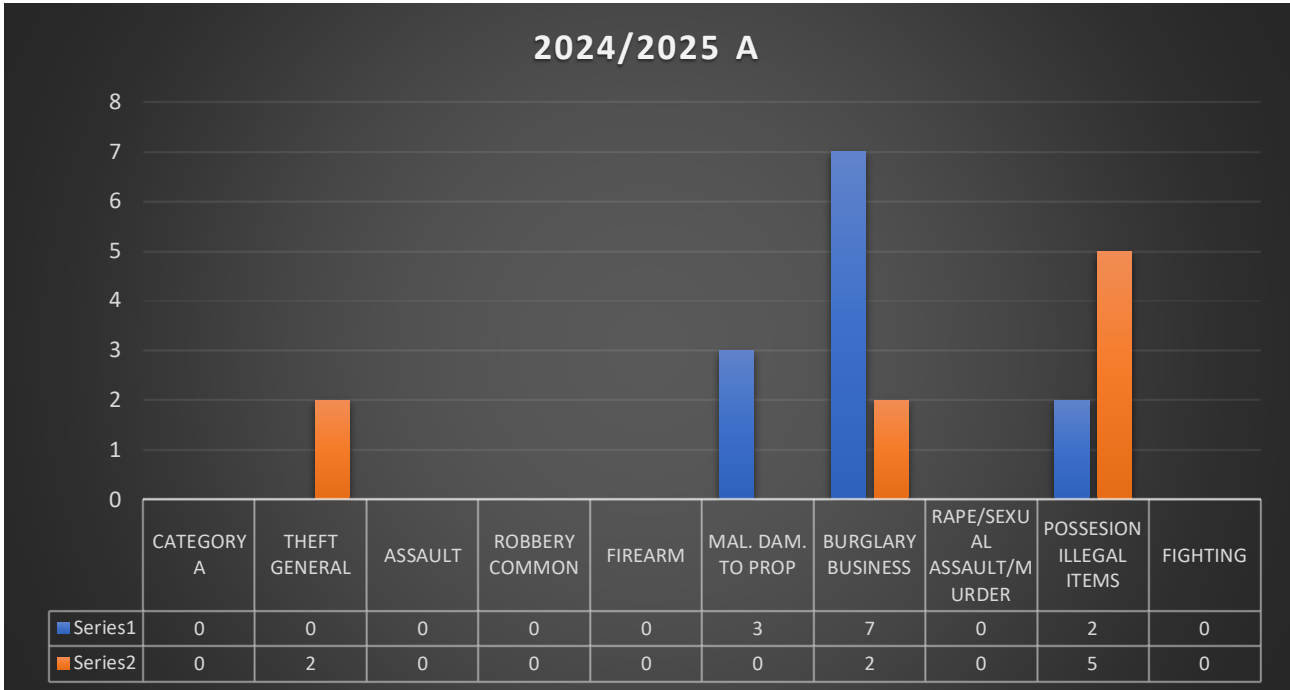


On Sunday evening, shortly after the start of their shift, patrol officers Jamda and Masekwana were driving down Service Road when they spotted an illegal dumping. Instead of ignoring it, the two officers pulled over and cleaned up the mess. This is a sign of commitment to the area especially because they put themselves at risk by cleaning in the middle of the road. They have showed that not only do they care about the safety

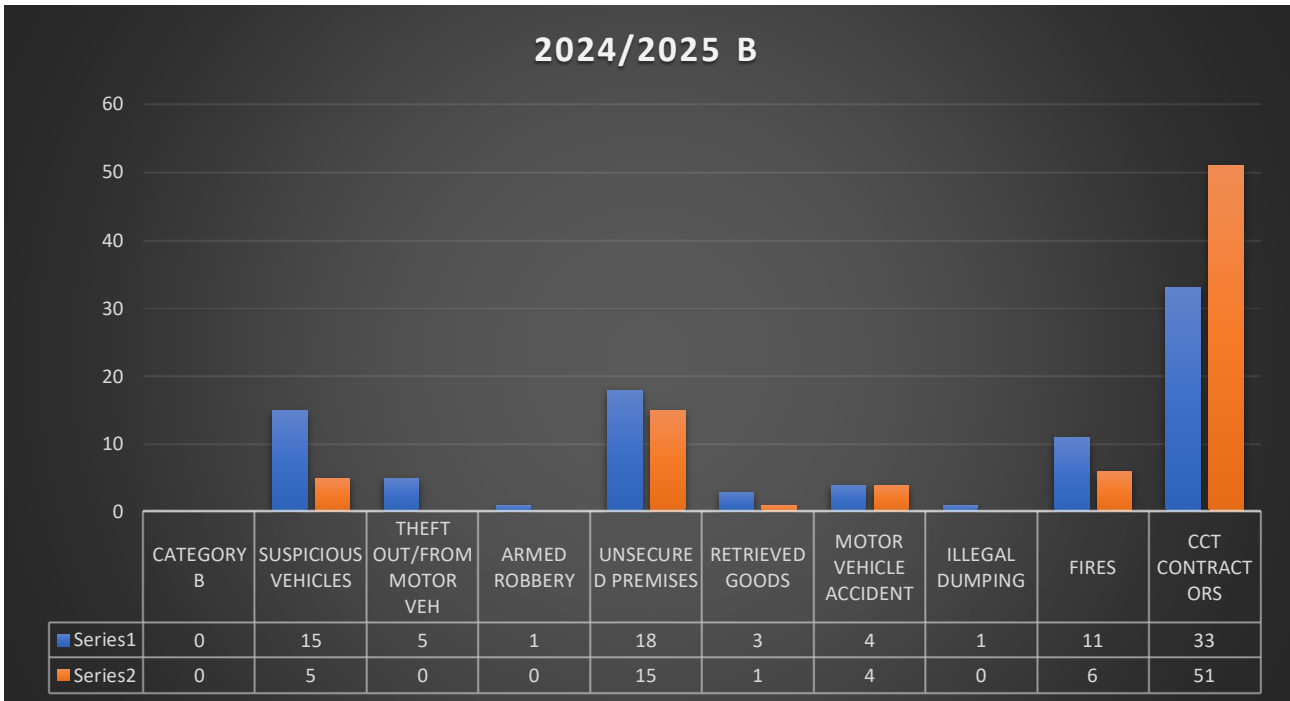


of our clients and the general public, but they also keep the environment in mind. Commitment and dedication such as this is not regularly found and PECID would like to extend our gratitude to the two officers for going the extra mile for our area.

INCIDENTS RECORDED BY CAMERA CONTROL CENTRE FEB. 24/25



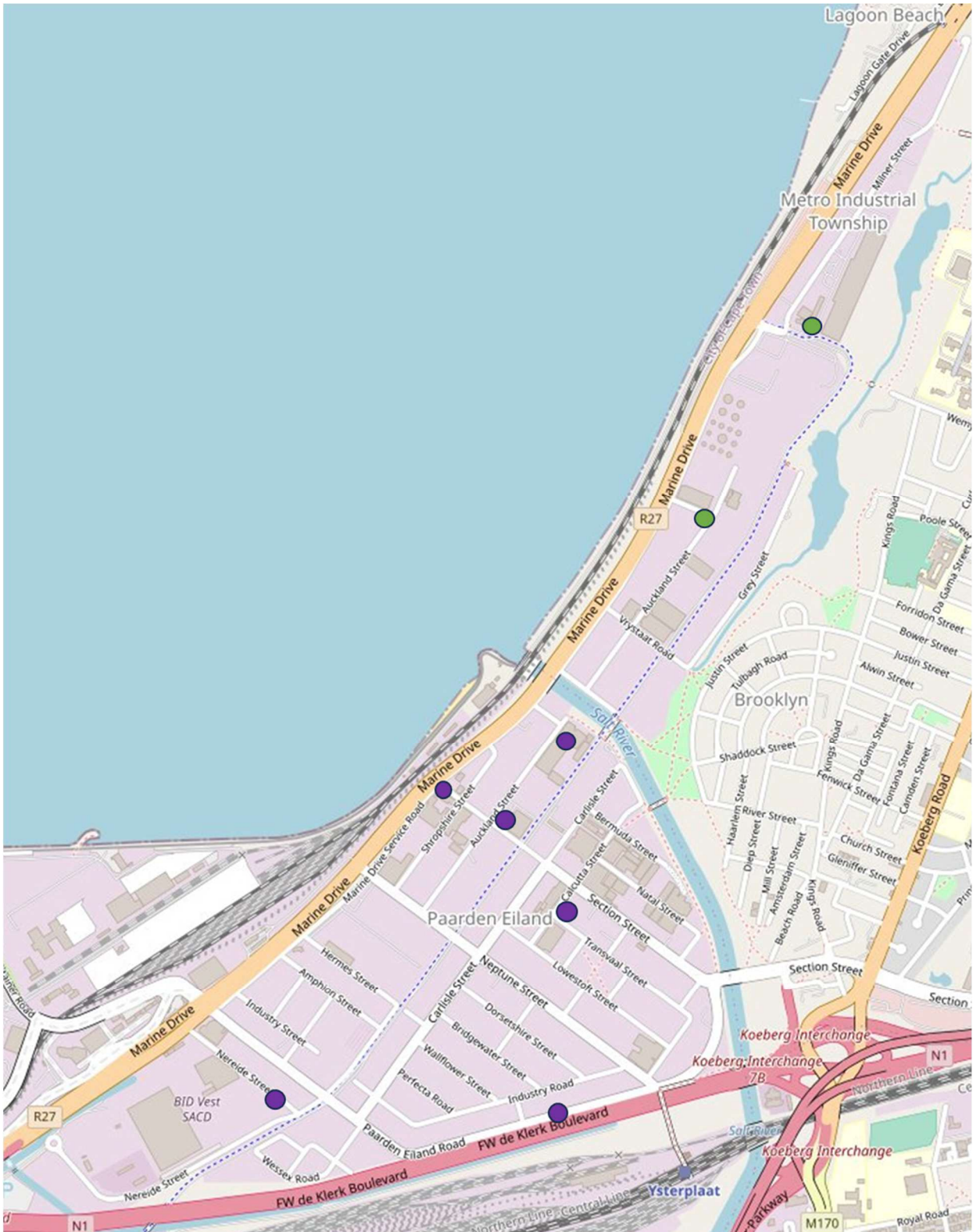
BLUE = 2024 / ORANGE = 2025



BLUE = 2024 / ORANGE = 2025



CRIMINAL CASES RECORDED BY SAPS



	Attempted theft from and out of vehicle
	Burglary business



CITY OF CAPE TOWN
ISIXEKO SASEKAPA
STAD KAAPSTAD



CITY OF CAPE TOWN BIODIVERSITY MANAGEMENT TEAM FEEDBACK

LITTER MANAGEMENT

Litter accumulation in natural areas remains an ongoing challenge, particularly in open reserves where wind and human activity contribute to waste build up. By early February 2024, litter at Zoarvlei had become a concern, exacerbated by the persistent summer winds that carried waste into the area. To mitigate the impact, a collaborative clean-up effort was organised for 7 February 2024, bringing together staff from Table Bay Nature Reserve and the PECID Environmental Crew.

The clean-up commenced in the morning, with teams working systematically to remove litter from high-priority areas within the reserve. Despite the sweltering heat, the group remained committed to the task, covering key sections of the site where waste had accumulated the most. By the end of the day, a total of seventy-four bags of litter had been collected, making a noticeable difference in the affected areas. We extend our appreciation to all those involved in this effort, particularly the PECID Environmental Crew for their support and collaboration.



ZOARVLEI FIRE MAPPING

Following the fire that occurred on 20 January at Zoarvlei, efforts were undertaken to accurately map the burn scar for scientific records and submission to the Biodiversity Management Branch fire database. Given the size and complexity of the affected area, traditional GPS mapping on foot was not feasible. The burn scar, covering just over seven hectares, extends through a watercourse densely populated with reeds, making ground-based surveying difficult.

The Zoarvlei Manager engaged Quemic's aerial division to conduct a drone survey of the affected site. The drone flights were conducted on 28 January, capturing high-resolution aerial imagery of the burn scar. The processed imagery was received on 29 January, providing a clear and comprehensive view of the fire's extent.

This data will now be integrated into our fire database to assist with long-term ecological monitoring and restoration planning.



FIRE AFFECTED AREA IN ZOARVLEI MARKED IN RED

GRYSBOK RELOCATION

On Sunday, 16th February, a young male Cape grysbok found itself in an unexpected and hazardous situation when it was cornered at the CTM store in the Paarden Eiland industrial complex. The presence of the small antelope in such a busy commercial area posed a risk to both the animal and the public, prompting concerned individuals to alert the reserve team for assistance.

Given that the closest natural habitat was Zoarvlei, a staff member from Table Bay Nature Reserve quickly responded to the call. Upon arrival, it was clear that the grysbok needed to be safely removed from the area to prevent further distress and potential harm. With careful handling, the animal was successfully captured and transported to a suitable section of Zoarvlei within Table Bay Nature Reserve.

Once released, the grysbok swiftly ran off into the vegetation, re-entering a safer and more appropriate environment. A special thanks goes to the members of the public who reported the sighting and to the Table Bay Nature Reserve team for their response in safely relocating the grysbok.



WATER QUALITY RESULTS FOR PAARDEN EILAND

Sampling location	Latest sampling date	Dissolved Oxygen (mg/l) Target > 7	E-coli (cfu/100ml) Target <4000
Salt River Canal at Marine Drive Bridge - Paarden Eiland	Jan 9, 2025	9.4	1 1000 000
Zoarvlei (south end) at corner of Vrystraat and Gray Street	Jan 28, 2025	3.8	77 000
Zoarvlei (centre) at Wemyss Road footbridge	Jan 3, 2025	2.7	131

SPOTTED IN PAARDEN EILAND / ZOARVLEI

The Common Starling

This small to medium bird known for its dark and glossy iridescent sheen of their plumage, with strong feet and their flight is strong and direct. Over 128 species that is native to Europe, Asia, Africa and Northern Australia. Their habitat spans from the open country and residential areas where human habitation is present. They are considered omnivores as they eat anything from seed grass to insects and human food. Starlings have a diverse and complex vocalisation, known to embed sounds from their surroundings, such as car alarms, other birds, as well as picking up human speech patterns.

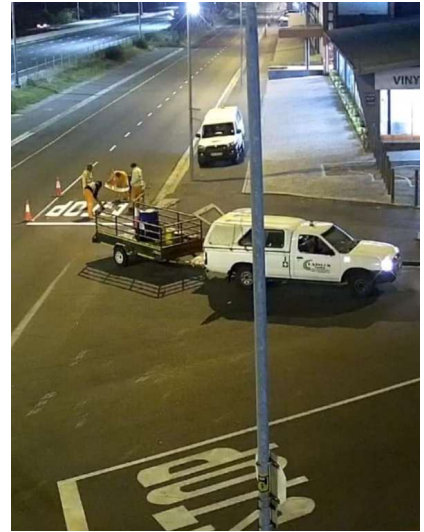
They are social birds that are known for their dramatic swarming behaviour known as murmuration – this happens when they simultaneously synchronise and move by sudden erratic flying and change directions. This amazing show is beautiful to witness and they create “Works of Art” in the sky. The idea behind this is to confuse and discourage predators such as falcons. Males find a suitable place for nesting such as the cavities in trees or in buildings. In order for the male to attract the female, they will decorate the nest with fresh flowers and fresh green material, this will encourage the female as the smell attracts them to the nest. Once the female is there, copulation takes place and together they will continue building the nest.

Breeding takes place between Summer and Spring, where the female lays eggs on a daily basis over a period of several days. The female will lay between 4- 5 eggs that is normally a pale blue or off-white colour. Incubation is approximately 13 days and both parents share the responsibility. Born blind and naked, they will develop light fluffy down feathers within 7 days of hatching, their eyesight takes 9 days to open. They will remain in the nest for 3 weeks while both parents are continuously feeding them. The chicks will then leave the nest to fend for themselves. The lifespan of the starling is only two -3 years, but if kept in captivity, they can reach up to ten -15 years. The Romans and Celts considered these birds as sacred and they symbolise community, family and healthy relationships with humans. Paarden Eiland has plenty of the Common Starlings as well as the Red Winged Starlings that try and survive in this noisy and busy industrial area.

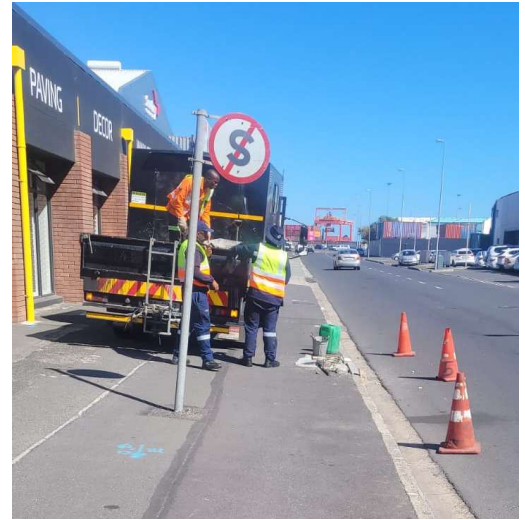
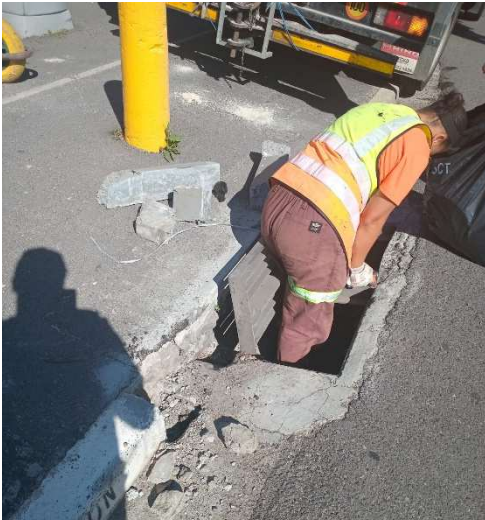


Murmuration

PHOTOS



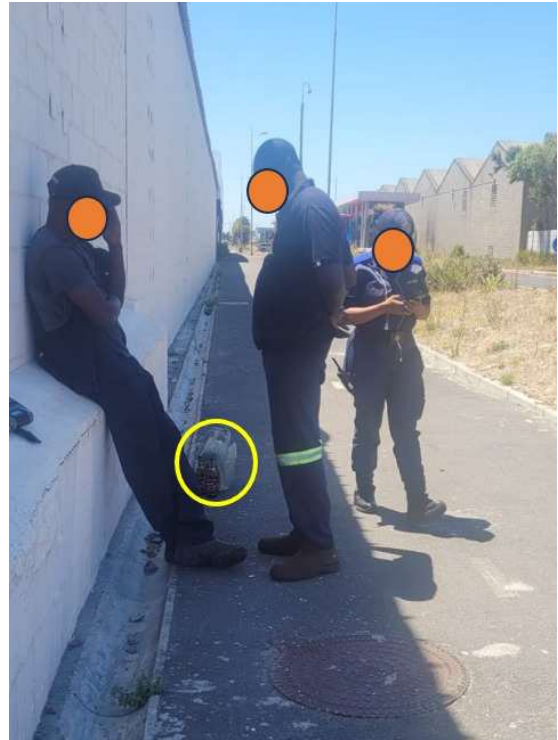
Contractors painting the road markings.



Council workers repairing infrastructure.



There has been a noticeable increase in the amount of CCT departments doing repairs in Paarden Eiland. Damage to infrastructure is now a daily process and requires everybody within the footprint of PECID to take action to prevent this.



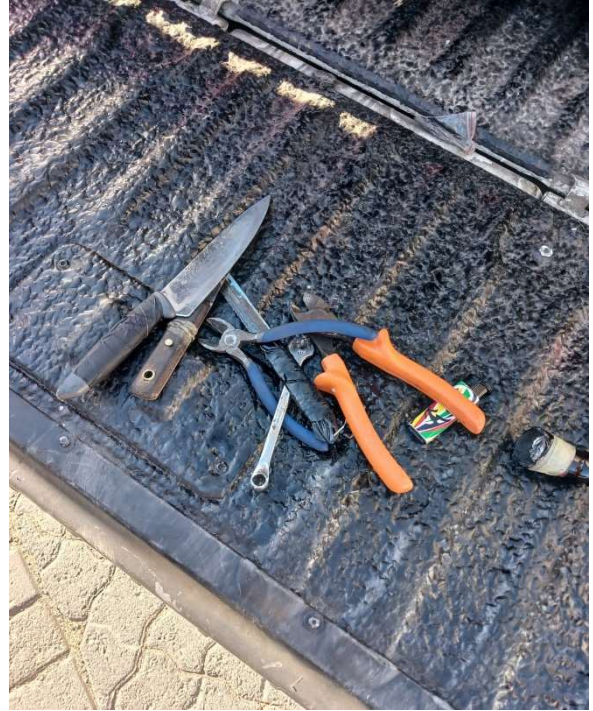
Law Enforcement with the help of PECID patrol officers dealing with those who break the by-laws.



The trucks that were parking in Wessex Street had been a problem and an eyesore for a long time. Several requests had been received for action to be taken against these truckers and their illegal repair operations that was taking place. Law Enforcement together with PECID have managed to get the trucks removed and they are currently outside of our footprint and subsequently no longer a problem for the business in the Wessex Street area. PECID is working with the BR&E to secure a permanent parking area for the trucks to avoid further confrontation.



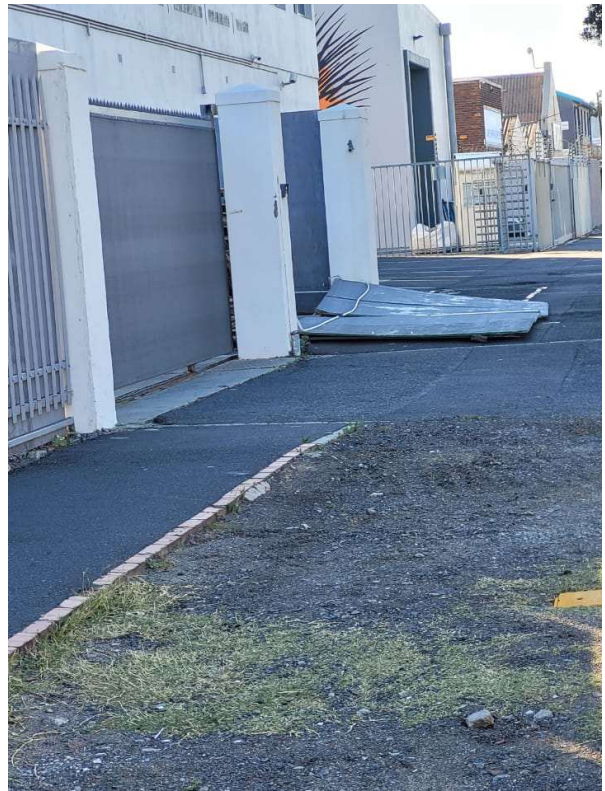
Fire in Wessex Street field, suspected arson



Confiscated goods.



Fence repaired after N1 accident



Gate fell over due to high winds.