



THE EILAND



ISSUE: 10

JUNE 2024

Letter from the editor:

Over the past month, our Patrol Officers have constantly been experiencing unsecured properties. Businesses will have to ensure that their premises are locked and secured before they leave as open doors and gates is only an invitation to enter and commit crimes. As previously discussed, these open premises also pose a threat to our officers, so we are asking the businesses to please ensure that their premises is secured, before they leave.

There has also been an increase in the amounts of illegal dumping's which in return have resulted in more scrap collectors operating in the area. This is a huge problem and needs to be addressed by all businesses if we want to have any chance of keeping Paarden Eiland clean. The rubbish that is left behind after the scrap collectors have completed collecting what they can use, ends up dumped on the street and sticking to fences contributing to an image of decay of the area.

We would also like to advise people making reports to our offices about service request to the City, that they please understand that these requests are connected to a turnaround time decided upon by the City. Whether it be a drain that needs cleaning or a streetlight that needs to be repaired, the City will always give us a time period for the repair, and we need to respect that as the City deals with many issues throughout the whole Metropole.

Regards

Chris Matthee – CID Manager PECID

Like and follow us on Facebook.

(Cut and paste into your browser)

<https://www.facebook.com/profile.php?id=100095721544327>



**EXCELLERATE
SERVICES**



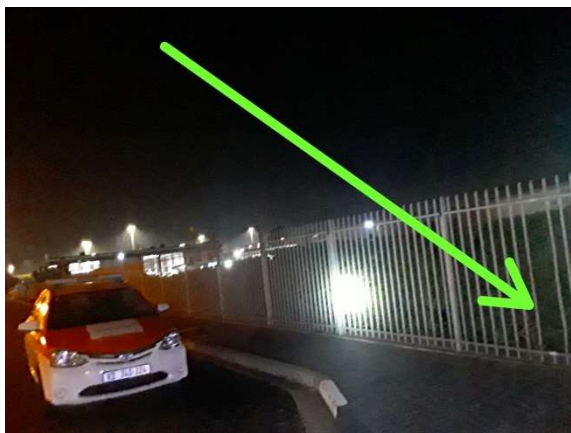
CITY OF CAPE TOWN
ISIXEKO SASEKAPA
STAD KAAPSTAD



FACEBOOK POST

ARREST – SECTION STREET

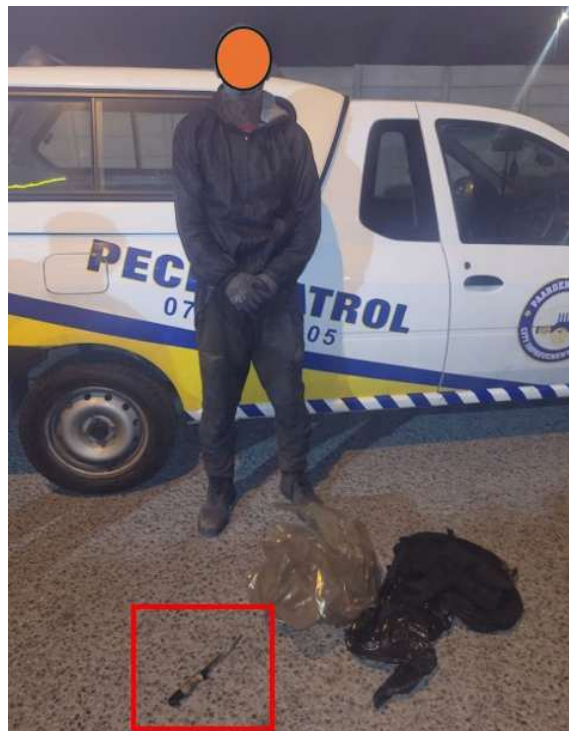
In the early morning hours of Saturday 15 June, the Excellerate Armed Response Officer received an alarm signal coming from a motor vehicle dealer on the outskirts of Paarden Eiland towards Koeberg Road. The Officer responded immediately and upon his arrival, found that there were three suspects inside the premises busy stealing aluminium and other valuable items. The Officer immediately called for back up from the dedicated Paarden Eiland Patrol vehicles who rushed to assist him. Together, the Excellerate staff entered the property and arrested the three men while the CCTV Control contacted SAPS. A SAPS vehicle was dispatched shortly thereafter, and the three males were taken into custody at Maitland SAPS. The three arrested men are very well known for illegal activities in the Paarden Eiland area which makes this a great catch! We would like to thank everyone involved for their commitment to make Paarden Eiland a safer place. Your effort is appreciated.



ARREST – SERVICE ROAD

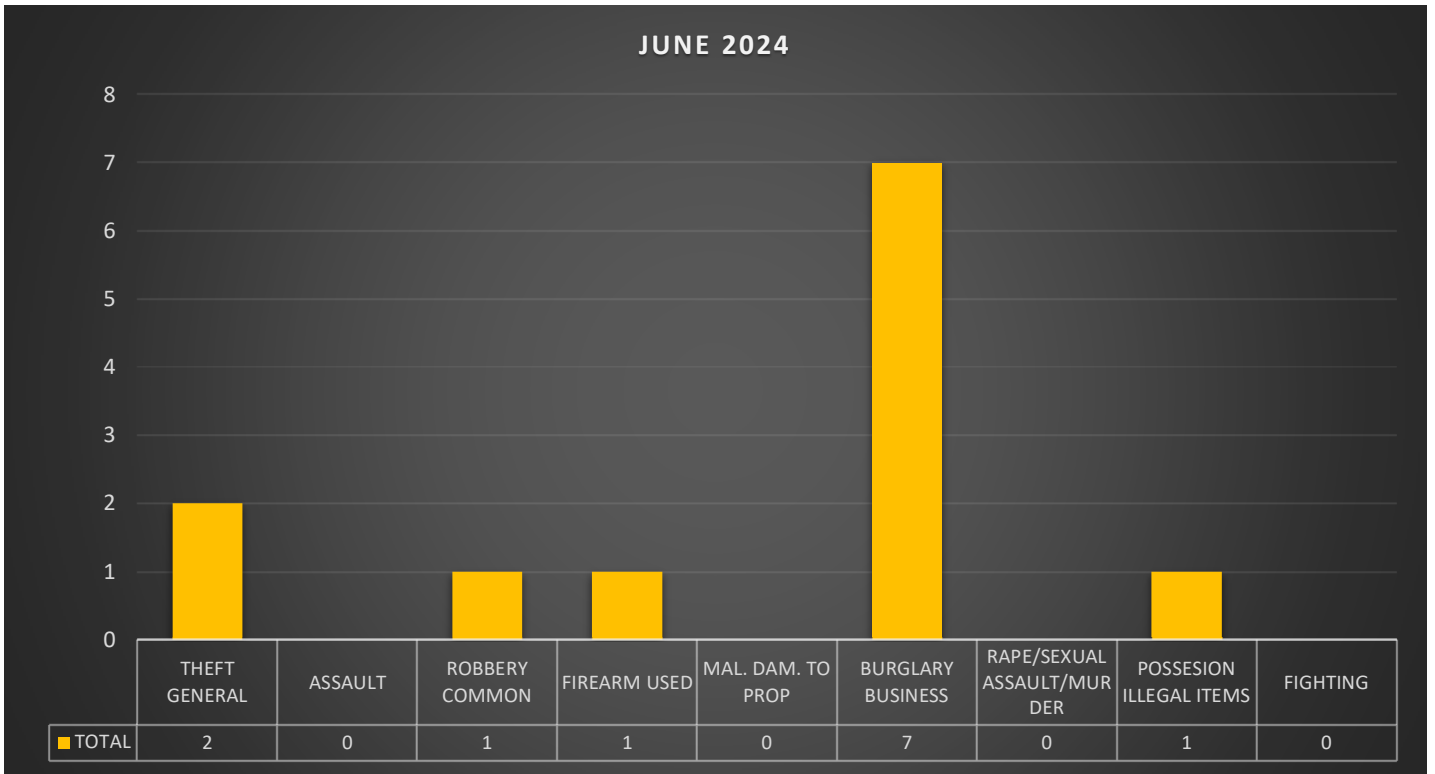
On the morning of Friday 21 June at about 03h50, the PECID CCTV operators noted a suspicious male walking in Service Road. The CCTV operators followed the male with their cameras until he ended up climbing onto the roof of a building. From this point of entry, the suspect would have been able to gain access to other properties.

It is at this point that the CCTV operators dispatched the Armed Response as well as the two PECID public safety units. Upon arrival the officers caught the suspect, who was armed with a knife, while the CCTV operators contacted SAPS as well as the security provider to the business. Upon the arrival of SAPS, the suspect was arrested and removed to Maitland SAPS where he was charged with trespassing.

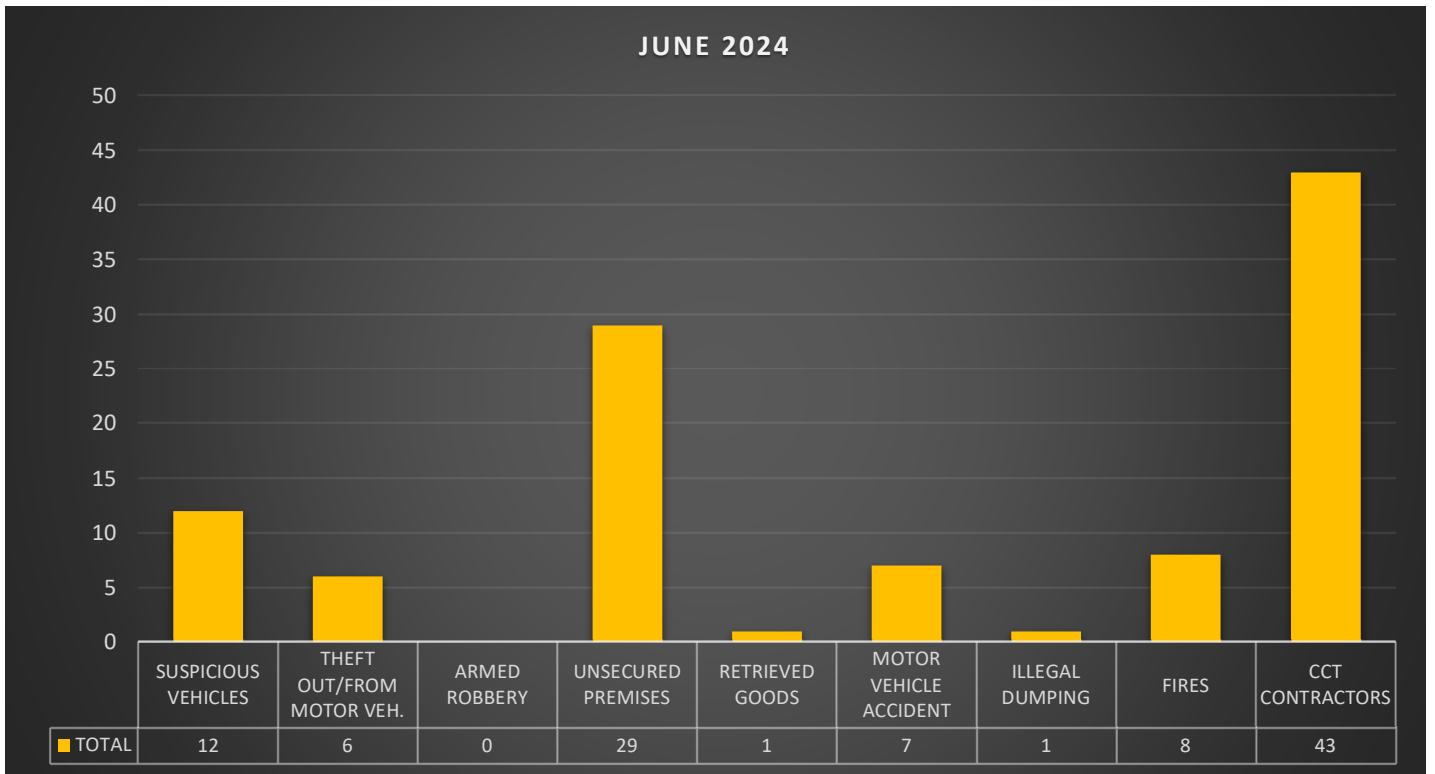


PAARDEN EILAND STATISTICS COMBINED AS RECORDED BY THE CONTROL ROOM

JUNE 2024



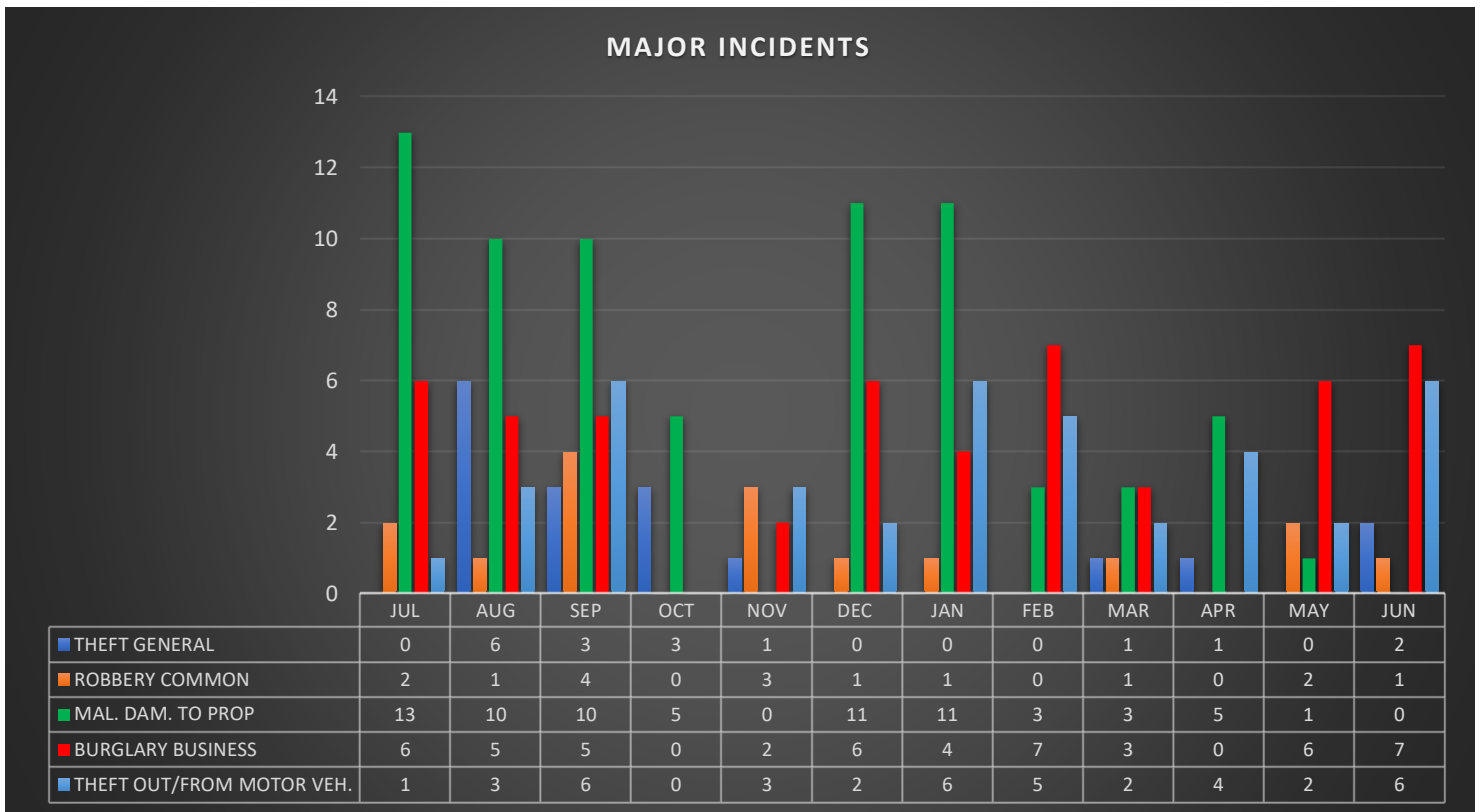
JUNE 2024



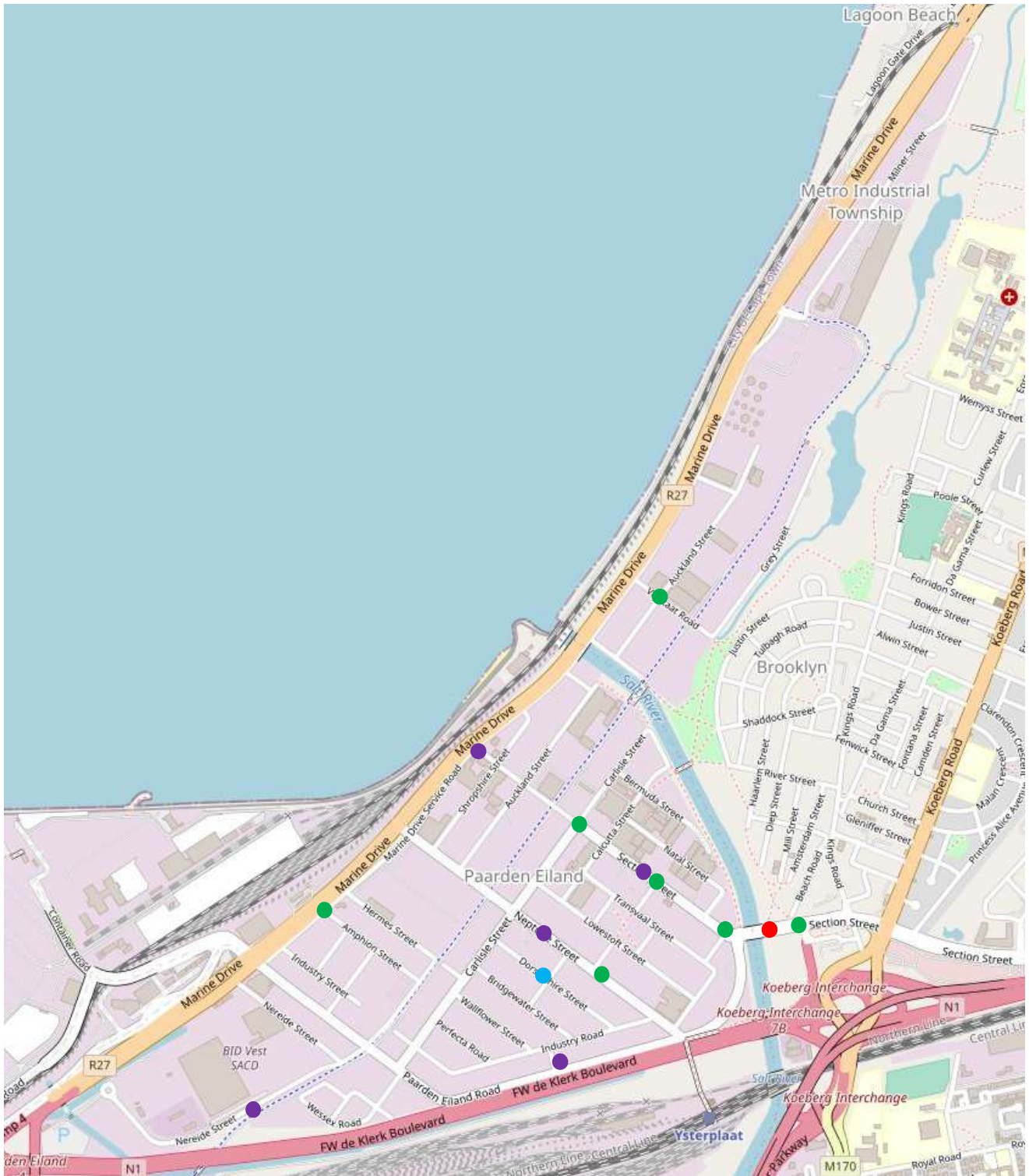
12 MONTH INCIDENT BREAKDOWN




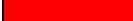
CATEGORY	JUL	AUG	SEP	OCT	NOV	DEC	JAN	FEB	MAR	APR	MAY	JUN	TOT
THEFT GENERAL	0	6	3	3	1	0	0	0	1	1	0	2	17
ASSAULT	0	0	0	0	0	0	0	0	0	0	0	0	0
ROBBERY COMMON	2	1	4	0	3	1	1	0	1	0	2	1	16
FIREARM USED	0	0	1	0	0	0	0	0	0	0	1	1	3
MAL. DAM. TO PROP	13	10	10	5	0	11	11	3	3	5	1	0	72
BURGLARY BUSINESS	6	5	5	0	2	6	4	7	3	0	6	7	51
RAPE/SEXUAL ASSAULT/MURDER	0	0	0	0	0	0	0	0	0	0	0	0	0
POSSESSION ILLEGAL ITEMS	4	7	0	1	0	0	6	2	14	1	2	1	38
FIGHTING	4	2	0	2	1	1	2	0	2	0	1	0	15
SUSPICIOUS VEHICLES	15	26	17	25	18	19	10	15	22	8	16	12	203
THEFT OUT/FROM MOTOR VEH.	1	3	6	0	3	2	6	5	2	4	2	6	40
ARMED ROBBERY	0	0	1	1	3	2	2	1	1	0	1	0	12
UNSECURED PREMISES	16	15	20	19	14	16	18	18	16	21	12	29	214
RETRIEVED GOODS	1	3	15	2	10	0	2	3	0	0	7	1	44
MOTOR VEHICLE ACCIDENT	7	9	2	3	5	4	4	4	5	8	2	7	60
ILLEGAL DUMPING	5	18	7	7	0	8	10	1	1	8	7	1	73
FIRES	12	11	15	16	4	12	7	11	3	4	4	8	107
CCT CONTRACTORS	26	29	35	41	53	21	31	33	31	41	33	43	417

(YELLOW BLOCKS INDICATE MAJOR CRIMES)



SAPS CRIME STATISTICS – CASES OPENED FOR JUNE 2024



	5	THEFT OUT OF MOTOR VEHICLE
	1	THEFT OF MOTOR VEHICLE
	7	BURGLARY BUSINESS
	1	ARMED ROBBERY (KNIFE)

CITY OF CAPE TOWN BIODIVERSITY MANAGEMENT TEAM

RESTORATION SEASON

June marked the beginning of the restoration. We received several bags of seeds, each carefully prepared for sowing. Some of the species included were narrow-leaved ice fig (*Conicosia pugioniformis*), common gonga (*Passerina corymbosa*), and chinkerinchee (*Ornithogalum thyrsoides*), to name a few. Our team meticulously prepared the restoration site to ensure optimal conditions for these species.

Once the site was ready, we began sowing the seeds, timed with the onset of the rains. This synchronization is vital for the seeds to take root, leveraging the natural water supply to enhance their chances of survival and growth.

In addition to the seeds, we received 84 honey everlasting (*Helichrysum patulum*) and 80 cobwebbush (*Plecostachys sp*) seedlings from the Westlake Conservation Centre. These seedlings were distributed throughout the restoration site, with our team planting them to ensure they hopefully establish a strong presence in the area. Throughout June, our efforts have been focused on giving these plants the best possible start. We look forward to monitoring the progress of these plantings and witnessing their positive impact on Zoarvlei's ecological structure.

SOIL SAMPLING

Throughout the year, Kamva Nose, a student from Table Bay Nature Reserve, selected the critically endangered Cape Flats conebrush (*Leucadendron levisanus*) for his third-year research project. This species, reintroduced to Zoarvlei since 2021, has established itself well in our restoration site.

Interestingly, the recruitment rate of the conebrush at Zoarvlei has been higher than in its natural habitats, sparking Kamva's research topic. Kamva aims to compare the soil characteristics of Zoarvlei's restoration area with four other natural sites where the conebrush occurs: Milnerton Racecourse Nature Reserve, Kenilworth Racecourse Conservation Area, the N1/N7 interchange, and Koeberg Nature Reserve. By analysing the soil properties at each location, Kamva hopes to uncover why the conebrush is thriving so successfully at Zoarvlei.

In June, soil samples were collected from Zoarvlei for analysis. It was discovered that the pH level at points where the conebrush grew averaged 8.3, which is relatively high for this species. This finding raises intriguing questions that Kamva will further explore in his research.

END OF EPWP CONTRACTS

As of May 30th, 2024, we bid a heartfelt farewell to our dedicated EPWP team whose contracts have come to an end. Lintathi Mthamo, Mziwodumo Langaseki, Neo Lunguza, Athenkosi Stokwe, Anele Mahlwempu, and Nobuhlobo Dyonase joined us for the year and have since been an invaluable part of the Zoarvlei team.

During their time spent, the team has significantly contributed to the maintenance and enhancement of Zoarvlei. Their tasks included, but were not limited to, assisting with general reserve upkeep, managing litter, conducting bird census, ecological restoration, and clearing alien vegetation. Their dedication and effort have played a crucial role in preserving the ecological health of Zoarvlei.

We are particularly pleased to announce that Mziwodumo Langaseki has already secured a new position with Quemic Integrity Africa. To Lintathi, Mziwodumo, Neo, Athenkosi, Anele, and Nobuhlobo: thank you for your hard work, commitment, and the positive impact you have made on Zoarvlei Nature Reserve. We are deeply grateful for the time you spent with us and wish you all the best in your future endeavours. Your contributions will not be forgotten, and you will always be a part of the Zoarvlei family.



EXCELLERATE SECURITY SERVICES – SAFETY TIPS

SAFETY TIPS TO PREVENT PROPERTY CRIME

1. Ensure that your property can be secured properly. This includes checking all locks, gates, doors, windows and roller shutters.
2. Ensure there are no gaps in your fence or perimeter wall or unintentional points of access to your business which may need additional security.
3. Make sure that all bushes or trees close to your walls, gates and fences are trimmed, to avoid the possibility of intruders hiding behind them or using them to access your property.
4. Adequate lighting around the perimeter of your business acts as a good deterrent
5. Connecting outdoor lights to timers and motion sensors act as an additional deterrent.
6. Have an alarm installed by a reputable security company with armed response.
7. The key to effective security lies in being able to detect a potential intruder before they gain access. Adding detection beams and sensors of electrical fences vastly contributes to property security
8. Ensure that your alarm is in working order. Business and property owners should test their alarms at least once a month and should the system require servicing this should be arranged as early as possible.
9. Please ensure that all the key holder information is available and ensure that key holders are available and able to come out to the property should the alarm activate, and checking be required.
10. Don't leave ladders, spades or tools outside as these can be excellent break-in tools.
11. Ensure that remote controls for automatic gates and garage doors are not left lying around.
12. Always be alert to vehicles or persons following you into your entrance or the parking area.

DEALING WITH CASH IN YOUR BUSINESS

- Alternate the days and times on which you deposit cash.
- Never make your bank visits public, even to people close to you.
- Do not openly display the money you are depositing while you are standing in the bank queue.
- Avoid carrying money bags, briefcases or openly displaying your deposit receipt book.
- It's advisable to identify another branch nearby that you can visit to ensure that your banking pattern is not easily recognisable or detected.
- If the amount of cash you are regularly depositing is increasing as your business grows, consider using the services of a cash management company.
- Refrain from giving wages to your contract or casual labourers in full view of the public, rather make use of wage accounts that can be provided by your bank.
- Refrain from driving to the bank in your company branded vehicle on a typical "pay day".
- Consider arranging for electronic transfers of wages to your contract workers or casual labourers personal bank accounts or using the "cash send" facility.



SPOTTED IN PAARDEN EILAND / ZOARVLEI

THE RED KNOBBED COOT

The Coot is a resident breeder across much of Africa and southern most area of Spain. He is a member of the Rail and Crake bird family. A fairly large black bird except for the frontal shield which is white. As a swimming species, it has partial webbing on its long strong toes. The juvenile is paler than the adult and lacks the facial shield. Once fully developed at one year the white frontal shield is developed. The Coot is considered as an aggressive species as they are very territorial especially during breeding season.

They build their nests which is made up of dead reeds near the water's edge and in the middle of waterways. The nest is built by both sexes. They breed all year round and lay 5 – 7 eggs at a time. They are noisy birds especially during breeding time. The females are smaller than the males and in non-breeding adults they have small knobs on the side of their bill, when breeding season starts the knobs on the male's forehead turn to red. Both sexes help feed the chicks and only after 1 day of hatching, they are ready to leave the nest. Both parents will continue to feed them for at least 55 – 60 days. The chicks are colourful at birth, this is due to the carotenoid pigments the mother adds to the yolks. Omnivores by nature, they feed on a variety of small prey, including other water birds' eggs and waterweeds.

The Coot is a reluctant flyer, and when taking off they run across the water surface with much splashing. It enjoys bobbing its head in and out of the water and diving into the water while searching for food. Their life span is approximately 5 years, and their predators are mostly large birds of prey like the falcon or eagle.

Paarden Eiland is truly fortunate to have this green belt situated along our border and we need to look after it for future generations to come.



IMAGES

ILLEGAL DUMPING



THE RESULT OF ILLEGAL DUMPING





EXCELLERATE
SERVICES



CITY OF CAPE TOWN
ISIXEKO SASEKAPA
STAD KAAPSTAD



LAW ENFORCEMENT



Addressing illegal parking issues occupies the largest part of the officer's day. The monitoring of displaced people, ensuring that they are warned regarding their possible removal has been of great assistance to PECID in the process of their legal removal.



INFRASTRUCTURE DAMAGE AND REPAIR



ACCIDENTS

These accidents happened around Paarden Eiland. Luckily nobody was killed but we need to pay attention to the traffic rules while driving. Obey the law and prevent these kinds of accidents from happening.

